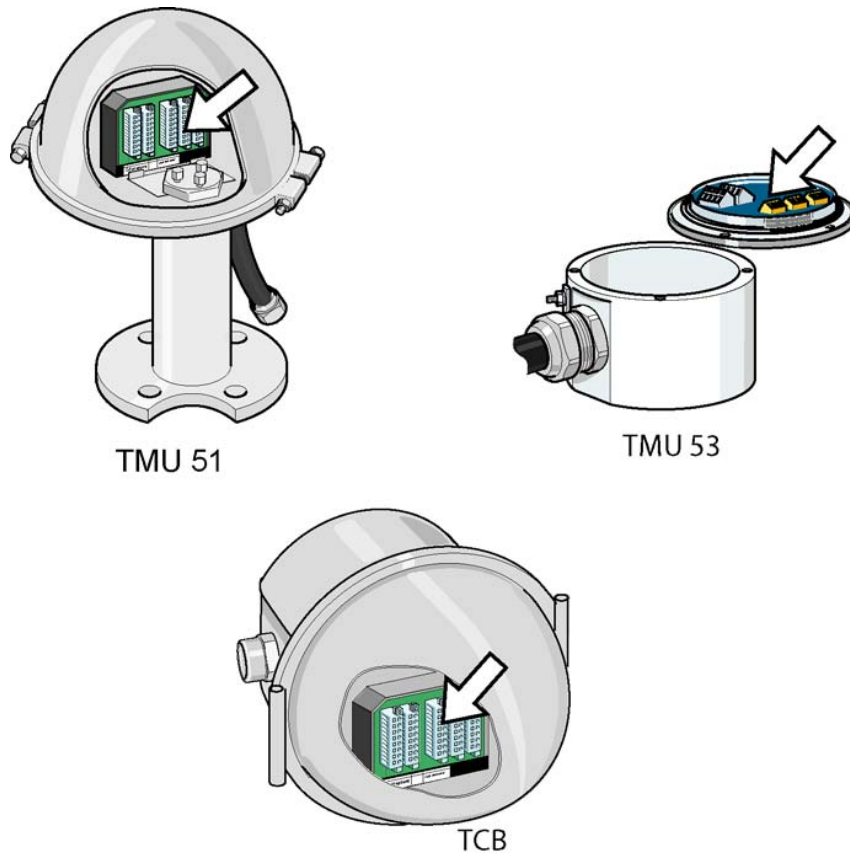


TMB and TMS General Service Information



The Temperature Measuring Block (TMB) can be placed in the TMU or in the Tank Connection Box (TCB).

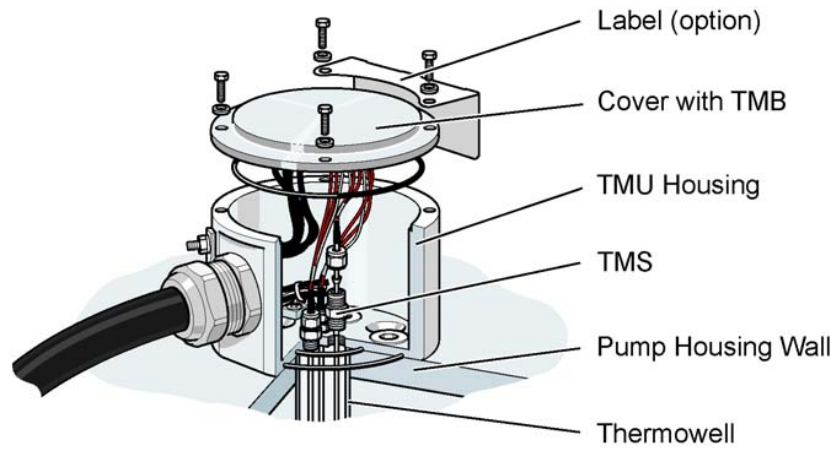
TMB and TMS

The Temperature Measuring Sensors (TMS) are connected to the Temperature Measuring Block (TMB) inside the Temperature Measuring Unit (TMU) or a Tank Connection Box (TCB).

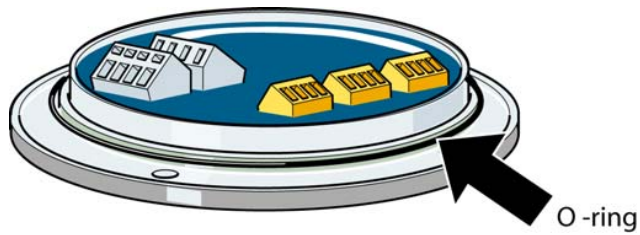
The TMB communicates with the TGU through a sensor bus.

The TMS is a Pt100 element with three (standard) or four (high accuracy) wire connections. The temperature of the cargo and vapor in the tank can be measured with up to five sensors for the tank deck mounted TMU 51 and three sensors for the pump mounted TMU 53. The TMS are distributed over the tank height. The TMS shall be located in a thermowell extended through the tank below the TMU.

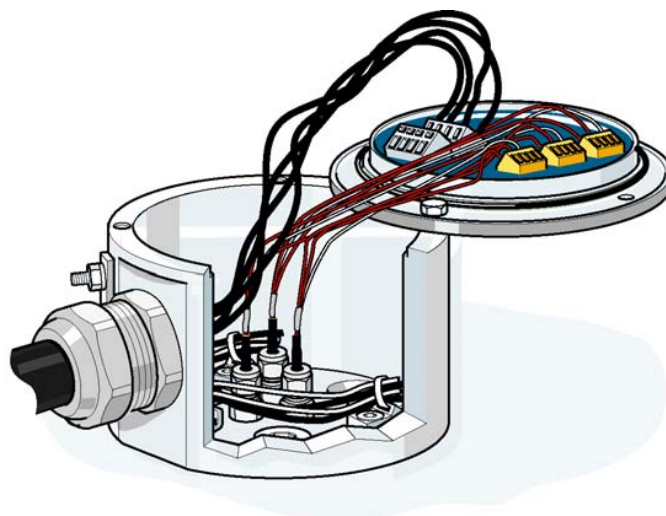
Replace TMB in TMU 53



1. Remove the bolts from the cover and the label of the TMU.
2. Lift the cover from the housing and check that the O-ring at the underside of the cover not is damaged, otherwise replace it.



3. Fasten the cover with the TMB upside down on the side of the TMU housing with one bolt.



4. Disconnect the wires from the old TMB and connect them, one after one, to the new TMB.

Note! Make sure that the wires stay in the same place as before.

5. Remove the old TMB from the cover and replace it with the new one.

Note! Make sure that the TMU housing is clean and dry.

6. Fit the outer label into place and bolt the cover to the housing.

Note! Make sure that the O-ring stays in place at the underside of the cover when it is bolted.
