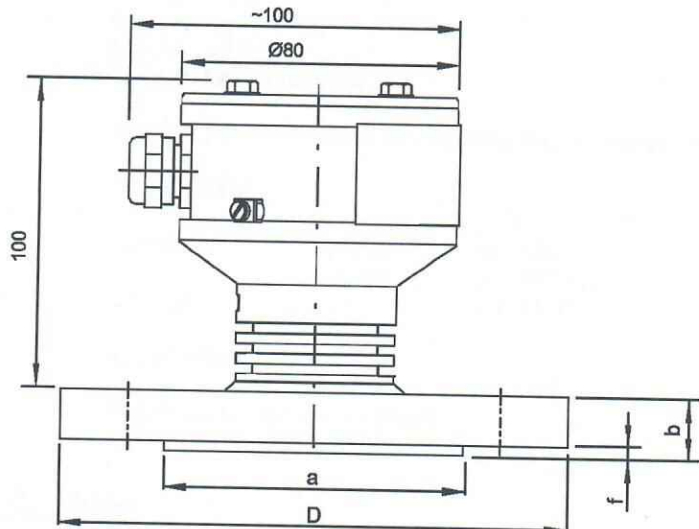
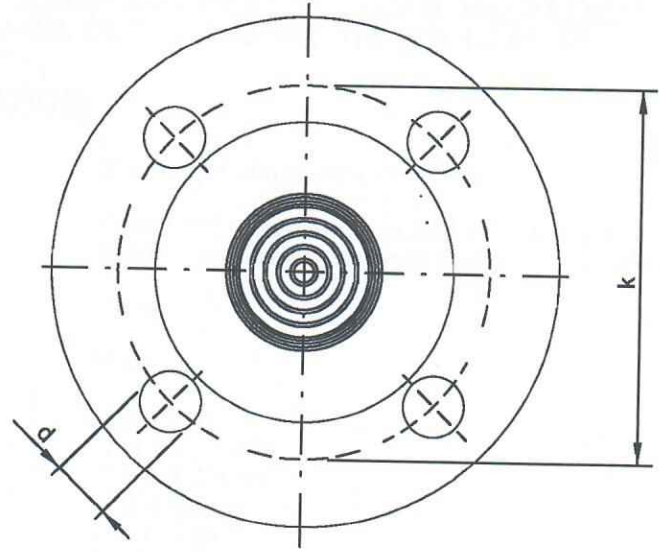


1 2 3 4 5 6 7

A
B
C
D
E
F
G
H



| Flange | D | b | a | k | f | d |
|---------------------------|-------|------|------|-------|-----|------|
| DIN 2527 DN40 PN40 | 150,0 | 18,0 | 88,0 | 110,0 | 3,0 | 18,0 |
| ANSI B16.5 DN40 class 300 | 155,6 | 20,6 | 73,0 | 114,3 | 1,6 | 22,2 |
| JIS B 2238 40K-40A | 160,0 | 24,0 | 90,0 | 120,0 | 2,0 | 23,0 |
| JIS B 2238 16K-40A | 140,0 | 16,0 | 81,0 | 105,0 | 2,0 | 19,0 |

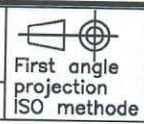
Other flange dimensions on request.

- Measurement ranges:
- 1 to 1 bar
 - 1 to 1,5...5 bar
 - 1 to 0,8...2,4 bar
 - 1 to 3 bar
 - 0 to 1...3 bar
 - 0 to 1,5...5 bar
 - 0 to 4...10 bar
 - 0 to 8...20 bar
 - 0 to 18...40 bar
 - Over 40 bar on request

Housing material: AISI 316L
Weight: ~4.0 kg

Dimensions in mm

SF-CONTROL



| | | | | | | | |
|---|------------|-------|-------------|-------------------------------|-------------|-------------|---------------|
| Tolerances ISO 2768 unless otherwise stated | CAD A4 | Scale | Revision | 04.10.04 MV | 04.10.04 MV | 18.10.04 JJ | C |
| | | | Revision | 16.11.99 KK | 17.11.99 KK | | B |
| | | | Revision | 21.08.96 JM | 21.08.96 JM | 23.08.96 JP | A |
| Drawing title | Related to | Scale | 04.10.95 JM | 04.10.95 JM | | | |
| MAIN DIMENSIONS | | | Design by | Drawn by | Approved by | | |
| MPT - MANIFOLD PRESSURE TRANSDUCER | | | Sheet | Manufacturer's Drawing Number | | | |
| | | | Item | | | | 400600 |

The copyright/ownership of this document is and will remain ours. The document must not be used without our authorization or brought to the knowledge of a third party. Contravention will be prosecuted.

Rev C New flange size added (16K 40A).
Rev D

Rev A Atm. conn. and meas. ranges added.
Rev B Some specification changed

Rev E
Rev F

400pysty

TECHNICAL SPECIFICATION

MANIFOLD PRESSURE TRANSDUCER MPT-XX

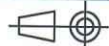
GENERAL SPECIFICATION:

| | | | |
|-------------------------|--|--|-------------|
| Housing material: | Stainless steel AISI 316L (SIS 2353) | | |
| Diaphragm: | Standard | Stainless steel AISI 317L (SIS 2367) | |
| | Option | Duplex Stainless steel SAF 2205 (ASTM A240 99A) | |
| Weight: | ~ 4 kg | | |
| Protection class: | IP 56 | | |
| Measurement range: | -1 to 1 bar -1 to 1,5..5 bar -1 to 0,8..2,4 bar -1 to 3 bar 0 to 1...3 bar 0 to 1,5...5 bar 0 to 4...10 bar 0 to 8...20 bar 0 to 18...40 bar Over 40 bar on request | | |
| Accuracy at 20 C: | <±0,5 % FSR | Incl. non-linearity, hysteresis and repeatability. | |
| Temperature dependence: | <±0,02 % / K | | |
| Ambient temp. range: | Operation: | standard | -20..+80 C |
| | | option | -30..+100 C |
| | Storage: | -50..+100 C | |
| Ambient humidity: | 0..100%Rh | | |
| Overpressure tolerance: | Two times measurement range Higher on request | | |

ELECTRICAL SPECIFICATION:

| | | |
|---|---|--|
| Supply voltage: | 19...32 VDC | Load resistance 0..1300 Ω |
| | 24 VDC nominal | Nominal 650 Ω |
| Output signal / Current consumption: | 4...20 mA | 2-wire connection |
| Explosion hazardous environment rating: | Ex ia IIC T4 | with zener barriers U _i = 28 V , I _i = 110 mA C _i = 55 nF , L _i = 5 μH |
| Cable gland: | Standard | PG13,5 Cable ø11..15 mm |
| | Option | PG11 Cable ø9..12 mm |
| Optional flexible cable protection tube: | Standard length 600 mm with PG13,5 or PG11 cable gland. | |

SF-CONTROL



First angle
projection
ISO methode

| | | | | |
|-------------|-------------|-------------------------------|-------------|---|
| Revision | 04.10.04 MV | 04.10.04 MV | 18.10.04 JJ | D |
| | 13.07.04 MV | 13.07.04 MV | 13.07.04 JJ | C |
| | 17.11.99 KK | 17.11.99 KK | | B |
| Design by | 6.11.95 EAS | 6.11.95 KA | | |
| Drawn by | | | | |
| Approved by | | | | |
| Sheet | 1 (1) | Manufacturer's Drawing Number | | |
| Item | | 700052 | | |

Tolerances ISO 2768 unless otherwise stated

Drawing title

TECHNICAL SPECIFICATION

MPT - MANIFOLD PRESSURE TRANSDUCER