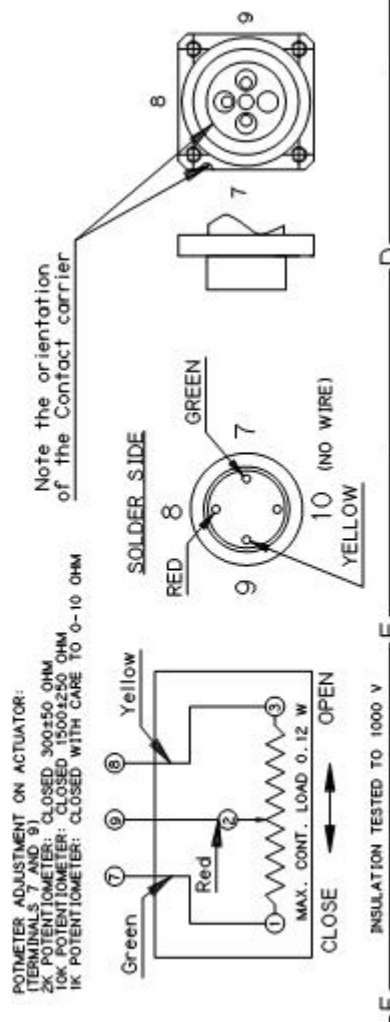
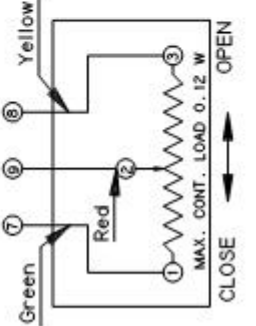


Please refer to mounting instruction
160R2138 or 160R2228



POTENTIOMETER ADJUSTMENT ON ACTUATOR:
5K POTENTIOMETER: CLOSED 300±50 OHM
10K POTENTIOMETER: CLOSED 1500±250 OHM
1K POTENTIOMETER: CLOSED WITH CARE TO 0-10 OHM



INSULATION TESTED TO 1000 V

MATERIAL SPECIFICATION:		MATERIAL:		UNIT:		QUANTITY:		DESCRIPTION:	
QTY. THIS POINT IS PROVIDED ON A RESTRICTED BASIS AND SHOULD BE RETURNED UPON REQUEST. IT IS TO BE USED ONLY FOR THE PURPOSE FOR WHICH IT WAS EXPRESSLY PROVIDED AND IS NOT TO BE COPIED IN ANY MANNER. FOR INFORMATION TAKERS THERE FROM TO BE PASSED ON TO OTHERS WITHOUT THE EXPRESS PERMISSION OF DAMCOS A/S. IT IS NOT TO BE USED IN ANY WAY REFERRED TO DAMCOS A/S.		THIS POINT IS PROVIDED ON A RESTRICTED BASIS AND SHOULD BE RETURNED UPON REQUEST. IT IS TO BE USED ONLY FOR THE PURPOSE FOR WHICH IT WAS EXPRESSLY PROVIDED AND IS NOT TO BE COPIED IN ANY MANNER. FOR INFORMATION TAKERS THERE FROM TO BE PASSED ON TO OTHERS WITHOUT THE EXPRESS PERMISSION OF DAMCOS A/S. IT IS NOT TO BE USED IN ANY WAY REFERRED TO DAMCOS A/S.		MATERIAL QUALITY/SURFACE TREATMENT:		MATERIAL QUALITY/SURFACE TREATMENT:		MATERIAL QUALITY/SURFACE TREATMENT:	
ORDER NO.:	QTY.:	DATE:	REV.:	REV.:	DATE:	REV.:	DATE:	REV.:	DATE:
160B4175	1	01.10.80	0	0	01.10.80	0	01.10.80	0	01.10.80
TOLERANCE		REPLACE:		REPLACED BY:		TOTAL WEIGHT:		REVISION:	
±	0.1 0.2 0.3 0.5 1.0					KG		DPI-C ASSEMBLY	
DAMCOS		DAMCOS		DAMCOS		DAMCOS		DAMCOS	
160B9047		160B9047		160B9047		160B9047		160B9047	