

CS/CS-3 HS/HS-3

Connection - and Mounting Blocks for Valve/Actuator Area

A1

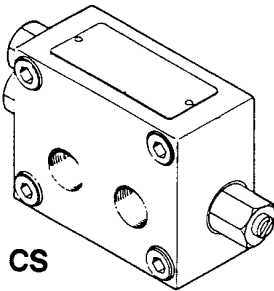
Connection - and mounting blocks for mounting on, or close to the actuator for the following purposes:

Emergency operation.

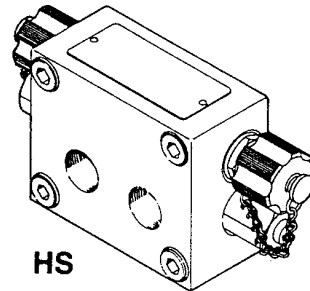
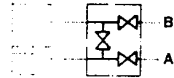
Flushing of lines and **de-airing** of lines and actuator.

Isolation during maintenance and repair.

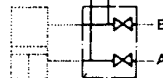
Connection
Blocks
CS & HS


CS

Hydraulic Symbol:

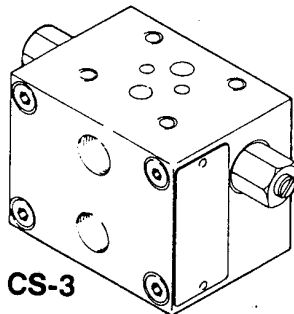
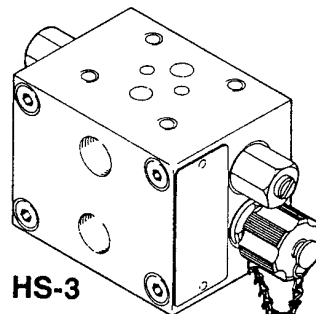

HS

Hydraulic Symbol:



When no
additional
control
equipment

Mounting
Blocks
CS-3 & HS-3


CS-3

HS-3

For mounting
of additional
control equip-
ment (Cetop 3)

Blocks with **cross-over valve** and **stop valves**.
Opening of the cross-over valve allows mechanical
operation of equal displacement actuator (BRC \cong 012).
Typical flushing/de-airing sequence:

- flush lines
- operate actuator once
- open cross-over valve
- flush
- close cross-over valve
- operate actuator
- open cross-over valve
- flush - etc.

Blocks with **hand pump connections** (male screw
connections) and **stop valves**.

Allows for operation by means of a portable
hand pump.

When flushing/de-airing a cross-over hose
(with built-in stop valve) is fitted to the
quick connections.

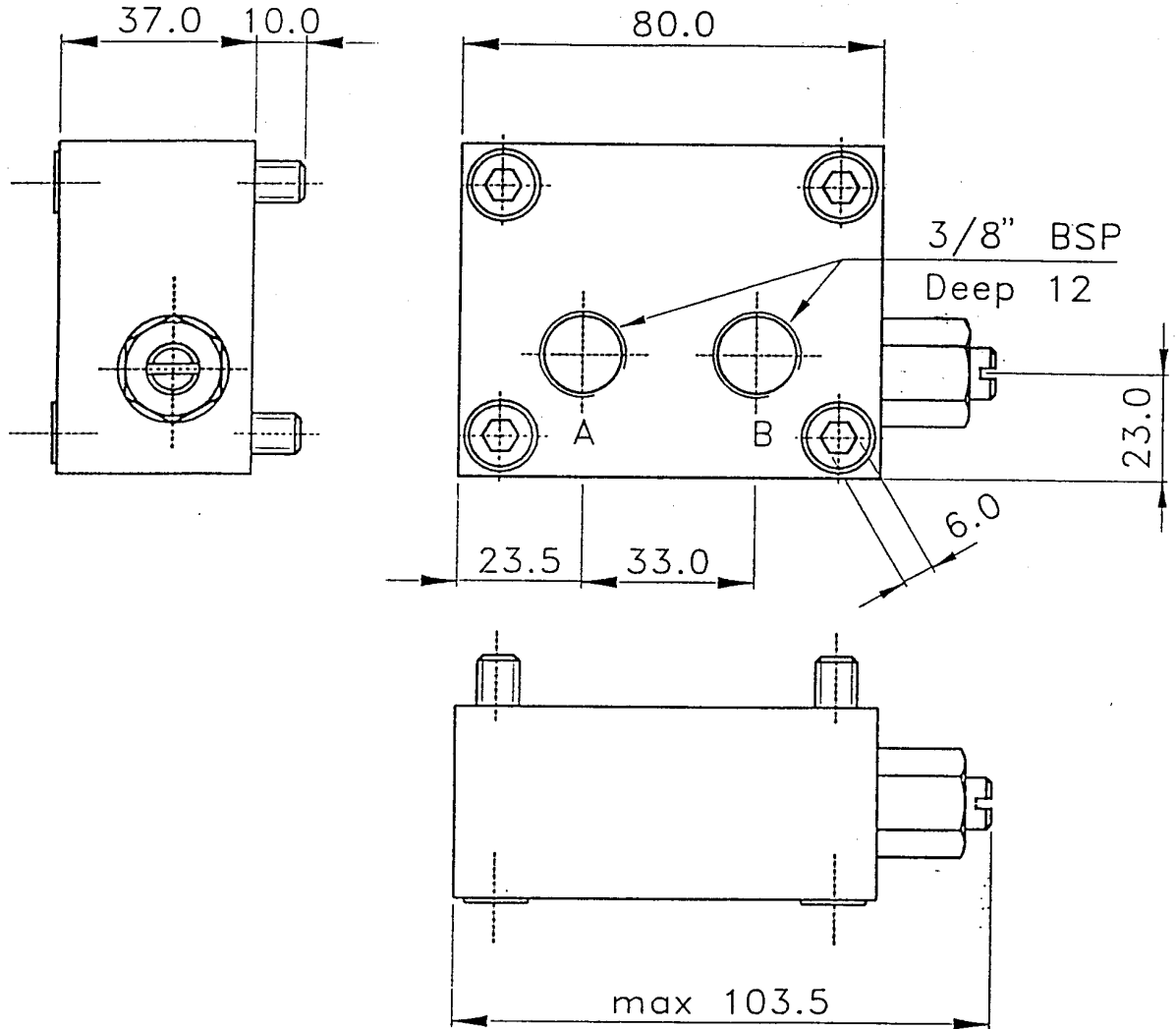
Main Data:

| | |
|--------------------------------------|------------------------------------|
| Max. operation pressure: | 210 bar ~ 3000 lbf/in ² |
| Max. test pressure: | 315 bar ~ 4500 lbf/in ² |
| Flow rate at 100 bar (50 cSt visc.): | 14.0 l/min. |

| | | | | |
|----------------|-----------|-----------|-------------|-------------|
| Weight approx: | CS | HS | CS-3 | HS-3 |
| kg | 1.55 | 1.65 | 2.40 | 2.50 |
| lb | 3.42 | 3.64 | 5.29 | 5.51 |

**Air valve block for
Submerged BRC-Actuator
Main Dimensions (mm)**

C-Block



Materials:

Body of SG-Iron, Valves and fastening bolts of stainless steel.