

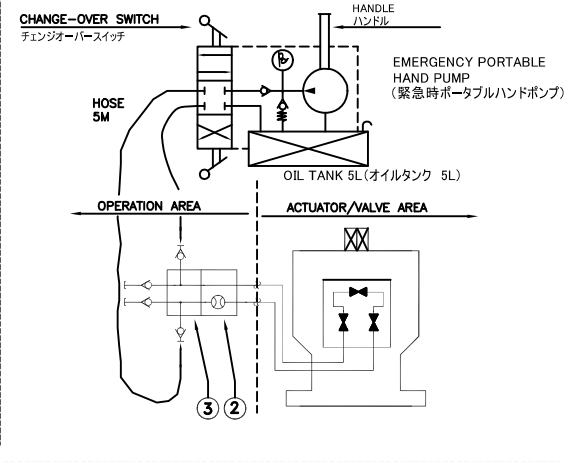
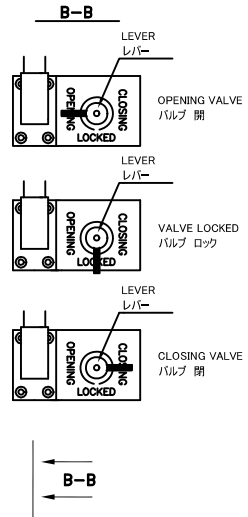
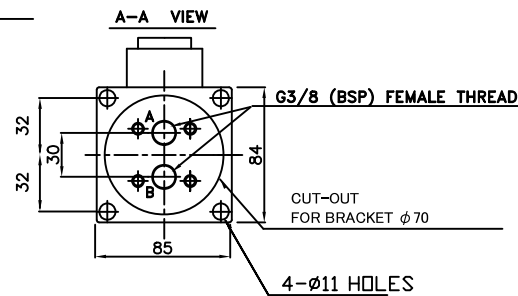
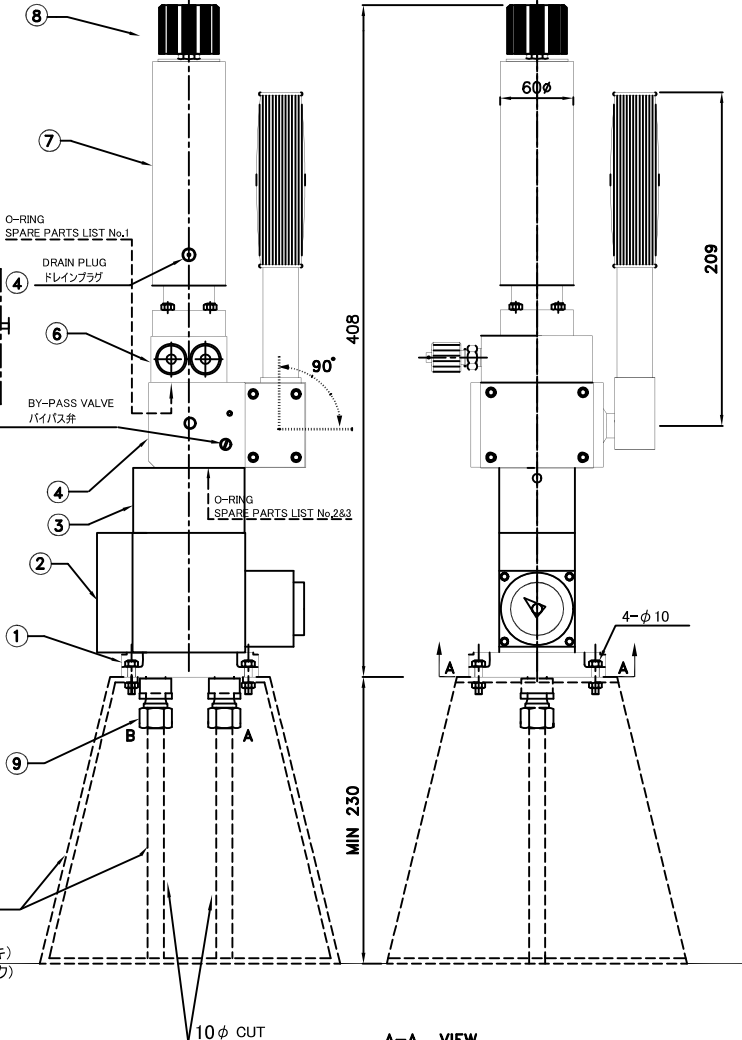
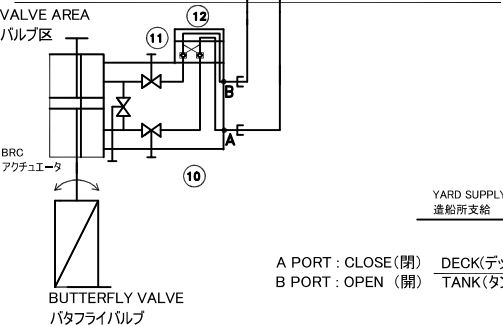
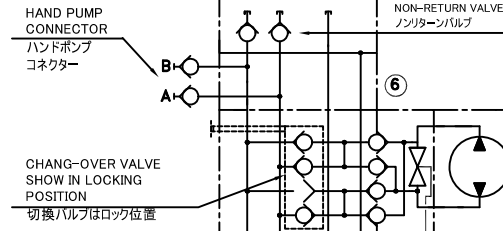
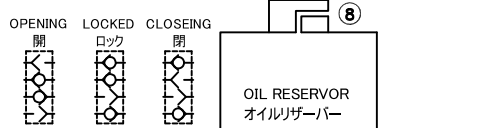
# HYDRAULIC FUNCTION

# DIMENSION / INSTALLATION (寸法図/取付図)

# EMERGENCY OPERATION

(ポータブルハンドポンプによる非常操作)

OPERATION AREA  
操作部



12	P-3	BSBM	1		
11	DPCV-3	BSBM	1		
10	CS-3	BSBM	1		BY-PASS BLOCK
9	JOINT		2		
8	OIL BREATHER		1		
7	OIL RESERVOIR	BSBM	1		
6	BLEEDING BLOCK	BSBM	1	BL-3	HAND PUMP CONNECTION
5					
4	DHP HAND PUMP	SUS304/BSBM	1	DHP14-3	1STROKE:14CC
3	NEUTRAL BLOCK	BSBM	1	N-BLOCK	
2	FLOW METER	BSBM	1	VPI	VPI-V
1	SUB-PLATE	BSBM	1	BP-3	▲ 1995.10.01
No	PARTS NAME	MATERIAL	QTY	TYPE	REMARKS

SPECIFICATION (仕様)

NORMAL OPERATING PRESSURE (作動圧力)	7.0MPa
MAX. OPERATING PRESSURE (最高仕様圧力)	12.0MPa
SYSTEM TEST PRESSURE (システムテスト圧力)	21.0MPa
OIL VISCOSITY RANGE (作動油粘度)	15cST
TEMPERATURE RANGE (温度範囲)	-20~80°C

ORDER No. -XO-	JW-No. PRD	ID-No.	TOTAL WEIGHT: APPROX.19KG	DESCRIPTION: MHPs MANUAL HAND PUMP UNIT
IF NOTHING ELSE SPECIFIED: (GENERAL INFORMATION)				This drawing or document is the property of the AMCO and is not to be reproduced, copied, or used for furnishing information to others or for any other purpose detrimental to the interests of the AMCO except by written permission of the AMCO.
NOMINAL DIM OVER TO	TOLERANCE ISO 2768	SURFACE ROUGHNESS Ra=	SCALE N.T.S.	
DESIGN: dsh	SING: N.O	CHECK: N.N	APPRO: T.I	DATE: 04.02.17
ISSUE	PAGE:	DRAWING No. J99042-3		
DIMENSION IN mm UNLESS OTHERWISE STATED				