

**POWER UNIT TYPE: HPU 100 FAP VERSION**

OIL TANK: 100 ltr. (Total vol. 180ltr.)  
 EL-MOTOR: 440V x 60Hz x 3ph., kw=1.75  
 GEAR PUMP: 2 x 5.0 ltr./min. at 1720 rpm  
 WORKING PRESSURE : 135 bar constant  
 INTERNAL WORKING PRESSURE : 140-165 bar  
 STANDARD PAINT: MUNSELL NO. 7.5 BG 7/2  
 WEIGHT : abt. 510 kg (Excl. Oil & Accumulator)

**ACCUMULATOR (SYSTEM BACK-UP)**

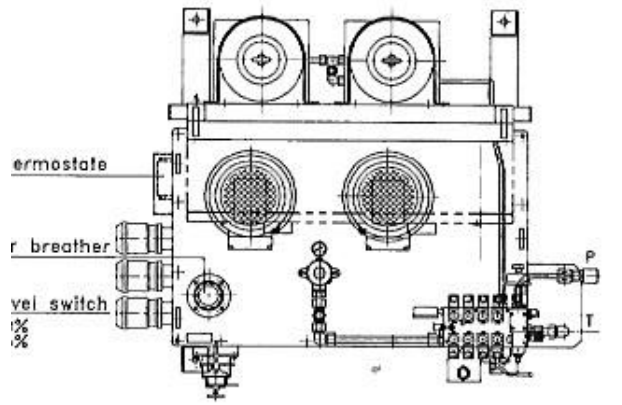
NOM..VOL.	Q'TY	WEIGHT(kg)
20ltr.	2	51(61)/102(122)/153(183)
32ltr.	2	87(97)/174(194)/261(291)
50ltr.	2	118(135)/236(270)/354(405)

**ALARMS**

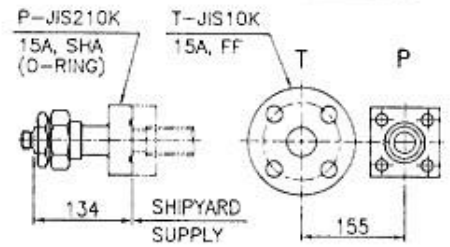
LOW LEVEL ALARM : AT A 50% NOMINAL TANK VOL.  
 STOP FOR NO.1 MOTOR : AT A 25% NOMINAL TANK VOL.  
 STOP FOR NO.2 MOTOR : AT A 25% NOMINAL TANK VOL.  
 LOW PRESS. ALARM : 130 bar (STD.)

**NOTES**

Pls consider working space "A" of 600mm.



**Pressure & Return line connection**



A4	DATE: 07/22/77	PROJECT NO. SD1013S	NUMBER	UNIT	MARK QUALITY/SURFACE TREATMENT
ORDER NO.	QUANTITY	THIS DRAWING IS PART OF A SET. THIS PRINT IS TO BE RETURNED WITH THE SET. IT IS TO BE USED ONLY FOR THE PURPOSE FOR WHICH IT WAS DESIGNED. PRODUCTIONS ARE NOT TO BE MADE IN ANY QUANTITY AND REVISIONS TO THIS DRAWING ARE TO BE TRANSMITTED OR PASSED ON TO OTHERS WITHOUT THE EXPRESS APPROVAL OF THE DESIGNER. IT IS TO BE USED AS A REFERENCE ONLY.			
IF NOTHING ELSE SPECIFIED (GENERAL INFORMATION)		SCALE	APPR	DATE	CHKD
APPROVED BY	DESIGNED BY	SCALE	APPR	DATE	CHKD
BY	BY	1:20	BHM	07/22/77	KBH
BY	BY		NJN		NJN
BY	BY		KBH		BHM
CHECKED BY		QTY	TOTAL WEIGHT		
BY		1	kg		
DESCRIPTION		HYDR. POWER UNIT 100ltr.			
DRAWING NO.		HPU100-90112-SL			
PAGE					