

MAKE SURE THAT THE POTENTIOMETER SHAFT POS. 24 AND THE WHEEL POS. 35 IS TOTALLY CLEANED BEFORE GLUEING. USE AKTIVATOR FOR CLEANING. USE LOCTITE 307 FOR GLUEING.

USE LOCTITE 638 TOGETHER WITH THE ORING SEAL

TORQUE : 0.25 Nm. — 42

TORQUE : 7 Nm. — 25

TORQUE : 4 Nm. — 41

TORQUE : 0.8 Nm.  
LOCTITE 638

18 TORQUE : 7 Nm.

POTMETER ADJUSTMENT : 300 ± 50 ΩHM

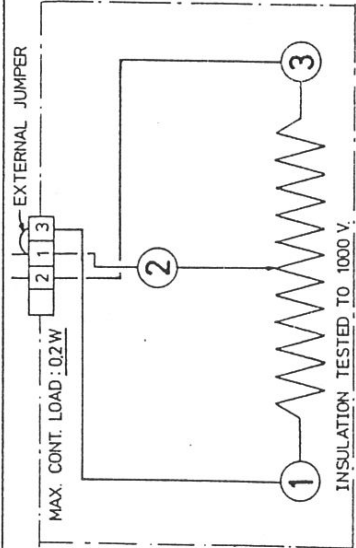
CLOSED POS : 300 ± 50 ΩL

OPEN POS : ~1500 ΩL

POTMETER ADJUSTMENT ONLY FOR CPI 622/0-68:

CLOSED POS : ~100 ΩL

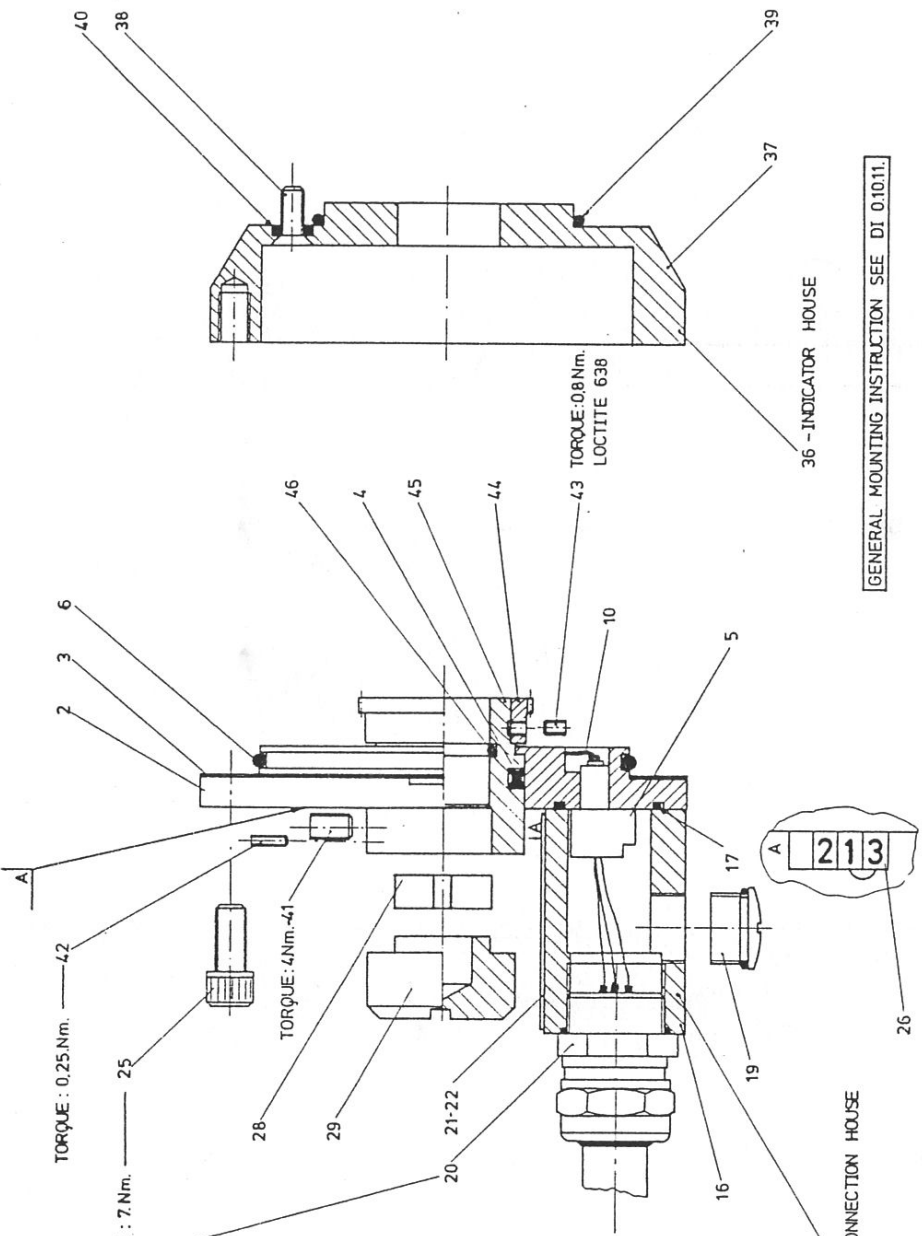
OPEN POS : ~1800 ΩL



SHAFT COVER POS.: 50

SHAFT COVER WITH SIGHT GLASS POS.: 55

A - DATE STAMPED



GENERAL MOUNTING INSTRUCTION SEE DI 0.10.11.

|            |  |            |  |            |  |            |  |
|------------|--|------------|--|------------|--|------------|--|
| N          |  | R          |  | M          |  | AV         |  |
| DATE       |  | DATE       |  | DATE       |  | DATE       |  |
| SIGNATURE  |  | SIGNATURE  |  | SIGNATURE  |  | SIGNATURE  |  |
| CPI        |  | CPI        |  | CPI        |  | CPI        |  |
| 16.089.000 |  | 16.089.000 |  | 16.089.000 |  | 16.089.000 |  |