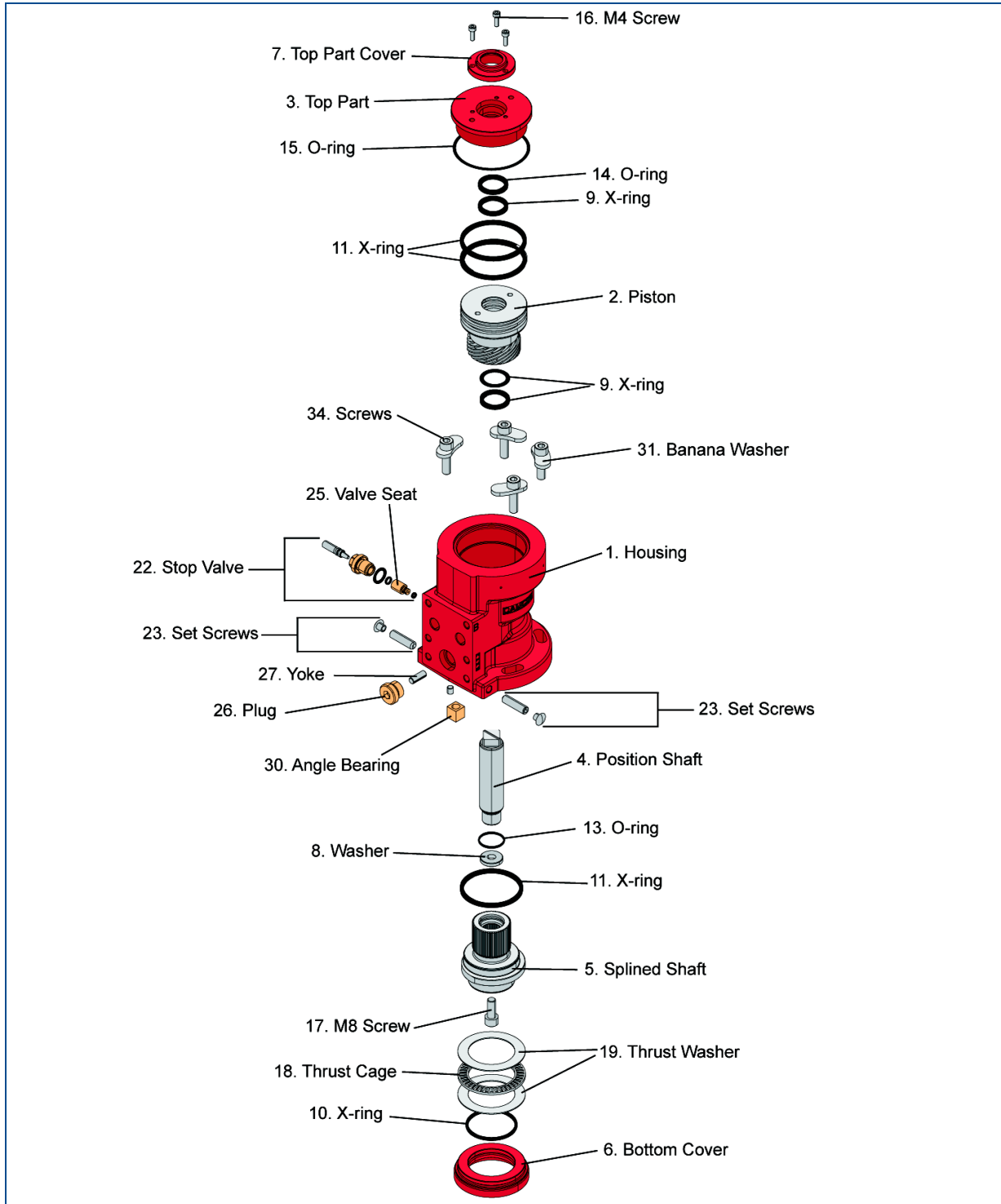


Spare Parts BRC 500



Parts-, Spare and Material List for BRC 500

PARTS-, SPARE & MATERIAL LISTEmerson Process Management
Marine Solutions
Damcos A/S

Component: type & version

ACTUATOR BRC 500 B1

Material no.:

160N1099

Alt.: 1

Aaderupvej 41
DK-4700 Naestved
Denmark
T + 45 5578 7200
F + 45 5578 7272

Page 1 of 2

Notes: All items with stated material number can be purchased as spare parts.
When ordering spare parts: please state material number.

Document numbers referred to: 160N9047

Posnr	Material	Description/ Compound	CTM No.	Quantity	Unit
0001		HOUSING BRC 500		1,000	PC
0002		PISTON BRC 500		1,000	PC
0003	160N0583	TOP PART BRC 500		1,000	PC
0004	160N0785	POS.SHAFT BRC 500 B1		1,000	PC
0005	160N0786	Splined shaft BRC 500 B1		1,000	PC
0007	160N0842	TOP PART COVER BRC 500		1,000	PC
0008	160N0596	WASHER BRC 500		1,000	PC
0009		X-RING Ø31,34X3,53		3,000	PC
0010		X-RING Ø55,25*2,62		1,000	PC
0011		X-RING Ø63.09*3.53		1,000	PC
0012		X-RING Ø75.79*3.53		2,000	PC
0013		O-RING Ø30.3*2.4		1,000	PC
0014		O-RING Ø31,34X3,53		1,000	PC
0015		O-RING Ø88,57X2,62		1,000	PC
0016	251-1529	SCREW M4X12		3,000	PC
0017	251-0106	SCREW M8X30		1,000	PC
0018	390-0011	THRUST CAGE D55		1,000	PC
0019	390-0111	THRUST WASHER D55		2,000	PC

PARTS-, SPARE & MATERIAL LIST

Emerson Process Management
Marine Solutions
Damcos A/S

Component: type & version

ACTUATOR BRC 500 B1

Material no.:

160N1099

Alt.: 1

Aaderupvej 41
DK-4700 Naestved
Denmark
T + 45 5578 7200
F + 45 5578 7272

Page 2 of 2

Refnr	Material	Description/ Compound	CTM No.	Quantity	Unmsr
0021		SEALING PLUG D6/5.3X6.5		1,000	PC
0022	160G2280	STOP VALVE D4		1,000	PC
0023		NAME PLATE FOR BRC 500 B1 160N1099		1,000	PC
0024		RIVET D1,9X5		2,000	PC
0025	160N1049	VALVE SEAT		1,000	PC
0026	160G5044	PLUG 3/8 INCH WG		1,000	PC
0027	160B4501	YOKE F. DPI BRC 500, L=24,50		1,000	PC
	160N1082	PAINT PLUG 1/4 INCH F.BRC		2,000	PC
SPARE	----->	160N1261, SET SEALS FOR BRC 500 B1 POS.9,10,11,12,13,14,15,25,33.		1,000	PC
INFO	----->	160N1171 COMMON PART BRC 500 POS.30,31,32,33,34,35,36.		1,000	PC
INFO	----->	160N1195 COMMON PARTS BRC 500 STAINLESS POS.30,31,32,33,34,35,36.		1,000	PC