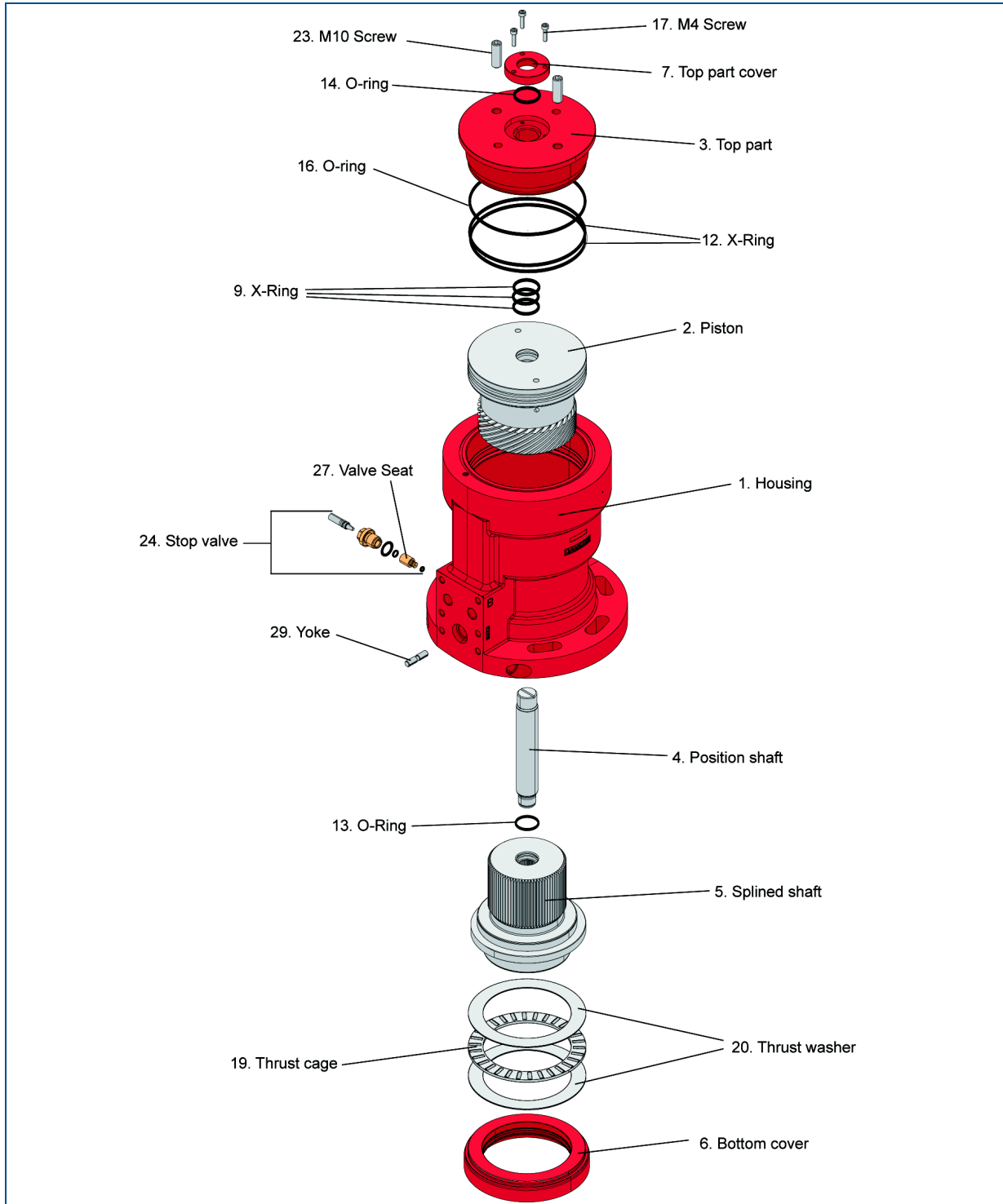


Spare Parts BRC 4000



Parts-, Spare and Material List for BRC 4000

PARTS-, SPARE & MATERIAL LIST

Emerson Process Management
Marine Solutions
Damcos A/S

Component: type & version

ACTUATOR BRC 4000 B1

Material no.:

160N1102

Alt.: 1

Aaderupvej 41
DK-4700 Naestved
Denmark
T + 45 5578 7200
F + 45 5578 7272

Page 1 of 2

Notes: All items with stated material number can be purchased as spare parts.
When ordering spare parts: please state material number.

Document numbers referred to: 160N9049

Posnr	Material	Description/ Compound	CTM No.	Quantity	Unit
0001		HOUSING BRC 4000		1,000	PC
0002		PISTON BRC 4000		1,000	PC
0003	160N0613	TOP PART BRC 4000		1,000	PC
0004	160N0791	POS.SHAFT BRC 4000 B1		1,000	PC
0005	160N0792	Splined shaft BRC 4000 B1		1,000	PC
0006	160N0617	BOTTOM COVER BRC 4000		1,000	PC
0007	160N0843	TOP PART COVER BRC 1000-32000		1,000	PC
0009		X-RING Ø21,82X3,53		3,000	PC
0010		X-RING Ø110,72*3,53		1,000	PC
0011		X-RING Ø132,72*5.33		1,000	PC
0012		X-RING Ø139,07*5.33		2,000	PC
0013		O-RING Ø22,3X2,4		1,000	PC
0014		O-RING Ø21,82*3,53		1,000	PC
0015		O-RING Ø165*2		1,000	PC
0016		O-RING Ø145.72*2.62		1,000	PC
0017	251-1531	SCREW M4X16		3,000	PC
0018	267-0014	SNAP RING EXTERNAL Ø17		1,000	PC
0019	390-0020	THRUST CAGE Ø110		1,000	PC
0020	390-0120	THRUST WASHER Ø110		2,000	PC

PARTS-, SPARE & MATERIAL LIST

Emerson Process Management
Marine Solutions
Damcos A/S

Component: type & version

ACTUATOR BRC 4000 B1

Material no.:

160N1102

Alt.: 1

Aaderupvej 41
DK-4700 Naestved
Denmark
T + 45 5578 7200
F + 45 5578 7272

Page 2 of 2

Refnr	Material	Description/ Compound	CTM No.	Quantity	Unmsr
0022		SEALING PLUG Ø9/8,4x10		1,000	PC
0023		SET SCREW/CUP POINT M12X30		2,000	PC
0024	160G2280	STOP VALVE D4		1,000	PC
0025		NAME PLATE FOR BRC 4000 B1 160N1102		1,000	PC
0026		RIVET D1,9X5		2,000	PC
0027	160N1049	VALVE SEAT		1,000	PC
0028	160G5044	PLUG 3/8 INCH WG		1,000	PC
0029	160B4504	YOKE F. DPI BRC 4000 + Kx 250, L=42,50		1,000	PC
	160N1082	PAINT PLUG 1/4 INCH F.BRC		2,000	PC
SPARE	----->	160N1264, SET OF SEALS FOR BRC 4000 POS.9,10,11,12,13,14,15,16,27.		1,000	PC
INFO	----->	160N1174, COMMON PART BRC 4000 POS.32,33,34,35,36,37,16.		1,000	PC
INFO	----->	160N1198, COMMON PART BRC 4000 STAINLESS POS.32,33,34,35,36,37,16.		1,000	PC