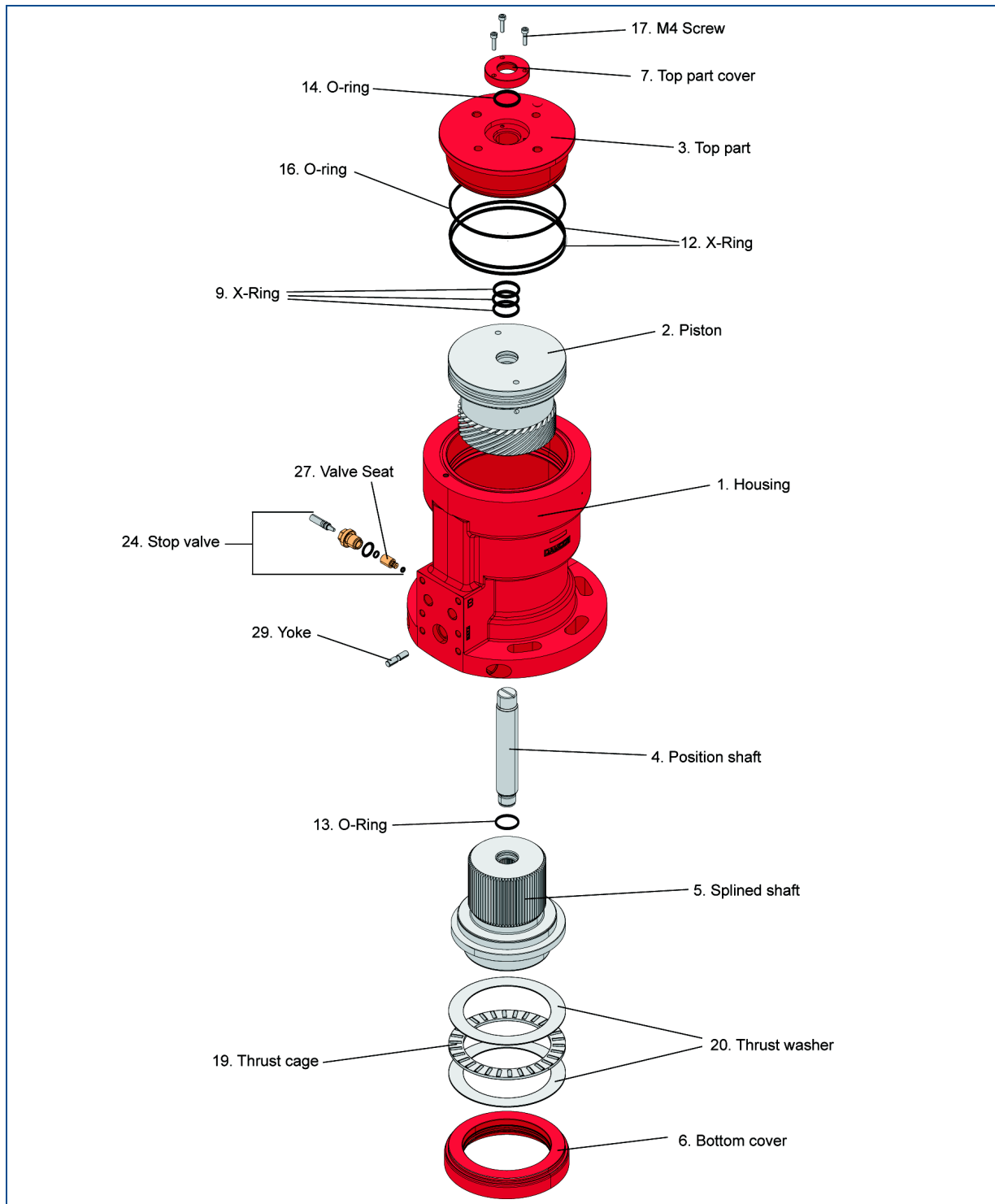


Spare Parts BRC 1000



Parts-, Spare and Material List for BRC 1000

PARTS-, SPARE & MATERIAL LIST

Emerson Process Management
Marine Solutions
Damcos A/S

Component: type & version

ACTUATOR BRC 1000 B1

Material no.:

160N1100

Alt.: 1

Aaderupvej 41
DK-4700 Naestved
Denmark
T + 45 5578 7200
F + 45 5578 7272

Page 1 of 2

Notes: All items with stated material number can be purchased as spare parts.
When ordering spare parts: please state material number.

Document numbers referred to: 160N9048

Posnr	Material	Description/ Compound	CTM No.	Quantity	Unit
0001		HOUSING BRC 1000		1,000	PC
0002		PISTON BRC 1000		1,000	PC
0003	160N0601	TOP PART BRC 1000		1,000	PC
0004	160N0787	POS.SHAFT BRC 1000 B1		1,000	PC
0005	160N0788	Splined shaft BRC 1000 B1		1,000	PC
0006	160N0605	Bottom cover BRC 1000		1,000	PC
0007	160N0843	TOP PART COVER BRC 1000-32000		1,000	PC
0009		X-RING Ø21,82X3,53		3,000	PC
0010		X-RING Ø71,12*2.62		1,000	PC
0011		X-RING Ø82,14*3.53		1,000	PC
0012		X-RING Ø91,67*3.53		2,000	PC
0013		O-RING Ø22,3X2,4		1,000	PC
0014		O-RING Ø21,82*3,53		1,000	PC
0015		O-RING Ø114,02*1.78		1,000	PC
0016		O-RING Ø94,92*2,62		1,000	PC
0017	251-1531	SCREW M4X16		3,000	PC
0018	267-0014	SNAP RING EXTERNAL Ø17		1,000	PC
0019	390-0014	THRUST CAGE D70		1,000	PC
0020	390-0114	THRUST WASHER D70		2,000	PC

PARTS-, SPARE & MATERIAL LIST

Emerson Process Management
Marine Solutions
Damcos A/S

Component: type & version

ACTUATOR BRC 1000 B1

Material no.:

160N1100

Alt.: 1

Aaderupvej 41
DK-4700 Naestved
Denmark
T + 45 5578 7200
F + 45 5578 7272

Page 2 of 2

Refnr	Material	Description/ Compound	CTM No.	Quantity	Unmsr
0021		SEALING PLUG D6/5.3X6.5		1,000	PC
0023	160G2280	STOP VALVE D4		1,000	PC
0024		NAME PLATE FOR BRC 1000 B1 160N1100		1,000	PC
0025		RIVET D1,9X5		2,000	PC
0026	160N1049	VALVE SEAT		1,000	PC
0027	160G5044	PLUG 3/8 INCH WG		1,000	PC
0028	160B4503	YOKE F. DPI BRC 1000 - 2000 L=27,75		1,000	PC
	160N1082	PAINT PLUG 1/4 INCH F.BRC		2,000	PC
SPARE	----->	160N1262, SET OF SEAL FOR BRC 1000 POS.9,10,11,12,13,14,15,16,26,35.		1,000	PC
INFO	----->	160N1172, COMMON PART BRC 1000 POS.32,33,34,35,36,37,38.		1,000	PC
INFO	----->	160N1196 COMMON PARTS BRC 1000 STAINLESS POS.32,33,34,35,36,37,38.		1,000	PC